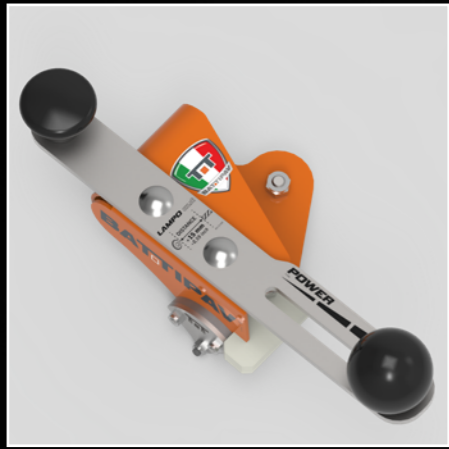


LAMPO CUT EVO

LAMPO CUT EVO (Art. 11101/2)	
MAX STRAIGHT CUTTING LENGTH	3200 mm
CUTTING THICKNESS WITH PLIERS (ART. 11301)	10 mm
LENGHT OF THE SINGLE TRACK	1690 mm
WHEEL	ø 22 mm (included) compatible ø 15 mm (not included)
WEIGHT	14 kg
PACKAGING DIMENSION	21 x 179 x 25,1 cm
PIECES FOR PALLET	21 pcs
FULL PALLET DIMENSION	72 x 175 x 190,7 cm





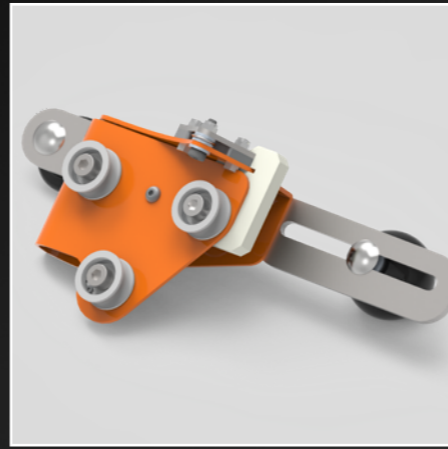
HANDLE DESIGN

New 2-handed handle with the possibility of adjusting the cutting pressure due to a graduated slot



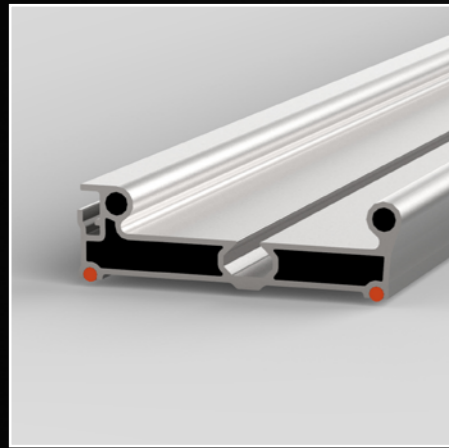
CONNECTIONS

With the Joint (art. 11204) it is possible to easily connect two or more products.



CARRIAGE

It is robust and comfortable to use with 3 nylon sliding pulleys with 3 ball-bearings.



PROFILE RAIL

Special profile rail, high resistance structure with rubber inserts:
- no scratches on the surface
- more stability during the cut



SLIDING BLOCK

A flexing sliding block in polypropylene ensures the linearity of the cutting.



SOFT CASE

Supplied with a soft case with, thanks to a pair of wheels, makes transportation easy and safe

POWER

Lower

Stronger



BAT TIPAV™

MAKE YOUR ITALIAN CUT