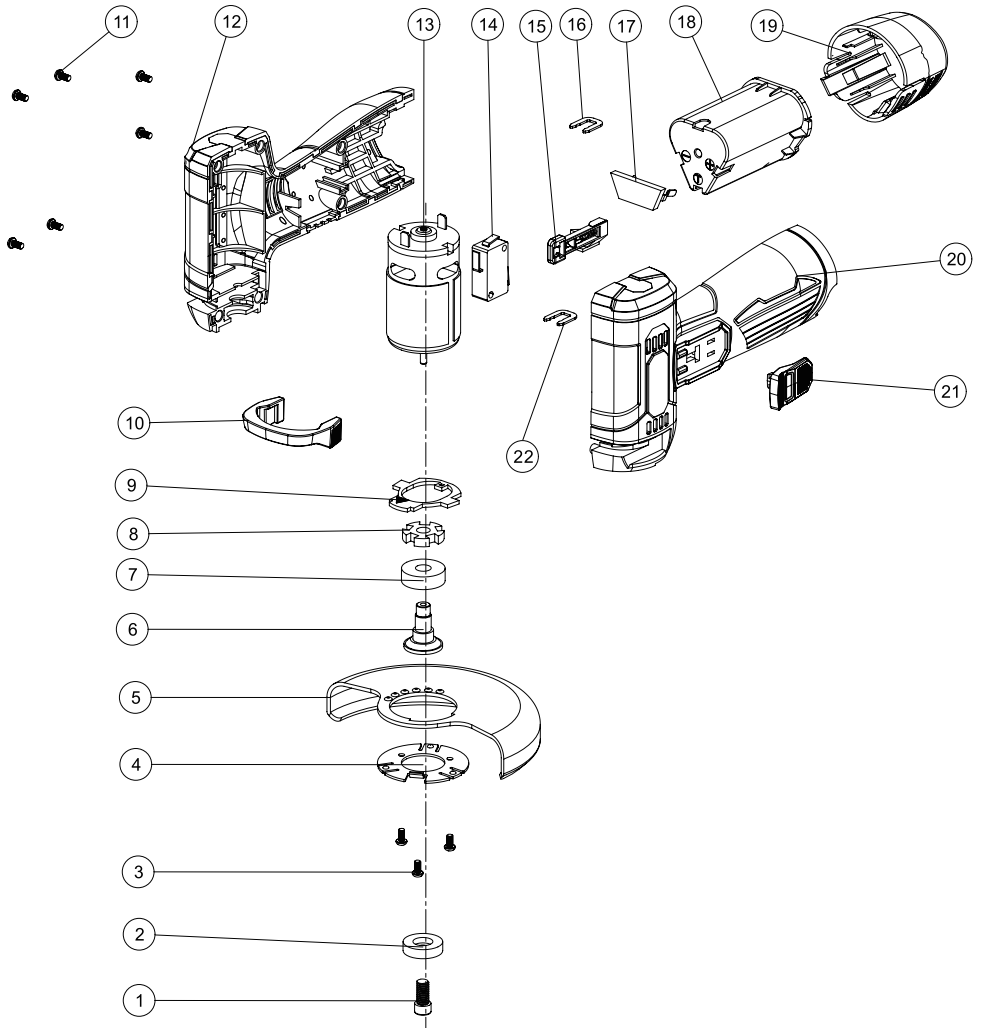


Mini Cordless Angle Grinder





Spare Part List

1	lamping plate screwM5x12C	12	Left casing
2	pressing plate	13	electrical machinery
3	serews for fixing thepressure plateST3x7.5x3	14	switch
4	keep plate	15	Switch pull rod
5	shield	16	U-shaped card
6	principal axis	17	step inside
7	608 bearing	18	Battery packcylinder
8	Lock ring	19	Battery pack bottom cover
9	brake block	20	Right casing
10	Nylon snap fastener	21	pul1-rod spring
11	Shell fixing screwsST3x10x6	22	locator card

1. Safety Warnings

⚠ Caution

Read all safety instructions and warnings provided with power tool. Failure to follow the instructions below may result in electric shock, fire and / or serious injury.

Keep all warnings and instructions for future reference.

The term "power tool" used in the safety instructions refers to mains operated power tools (with power cord) or to battery operated tools (without power cord).

General safety warnings for power tools

1.1 Safety in work area

- a) **Keep your work area clean and well lit.** Disarray or unlit work areas can lead to accidents.
- b) **Do not work with the power tool in a potentially explosive environment in which flammable liquids, gases or dusts are present.** Power tools generate sparks that can ignite the dust or fumes.
- c) **Keep children and bystanders away while using the power tool.** Distractions can result in a loss of control.

1.2 Electrical Safety

- a) **The plug of the power tool must fit into the socket. The plug must not be changed in any way.** Do not use adapter plugs together with electrically grounded power tools. Unmodified plugs and matching sockets reduce the risk of electric shock.
- b) **Avoid body contact with grounded surfaces such as pipes, heaters, stoves, and refrigerators.** There is an increased risk of electric shock if your body is grounded.
- c) **Keep power tools away from rain or moisture.** The penetration of water into a power tool increases the risk of electric shock.
- d) **Do not misuse the power cord to carry the power tool, hang it up, or unplug it from the power outlet.** Keep the connection cable away from heat, oil, sharp edges or moving parts. Damaged or entangled leads increase the risk of electric shock.
- e) **When working outdoors with a power tool, only use extension cables that are also suitable for outdoor use.** Using an extension cord suitable for outdoor use reduces the risk of electric shock.
- f) **If operation of the power tool in a damp environment is unavoidable, use a residual current device.** Using a residual current circuit breaker reduces the risk of electric shock.

1.3 Personal Safety

- a) **Be attentive, pay attention to what you are doing and be reasonable about working with a power tool. Do not use a power tool when you are tired or under the influence of drugs, alcohol or medication.** A moment of carelessness when using the power tool can cause serious injury.
- b) **Wear personal protective equipment and always safety goggles.** Wearing personal protective equipment such as a dust mask, non-slip safety shoes, hard hat or ear protection, depending on the type and use of the power tool, reduces the risk of personal injury.
- c) **Avoid unintentional startup. Make sure that the power tool is switched off before connecting, receiving or carrying it to the power supply and / or the battery.** Keeping your finger on the switch when you are wearing the power tool or plugging the power tool into power can cause an accident.
- d) **Remove setting tools or wrenches before turning on the power tool.** A tool or key located in a rotating part of the power tool can cause injury.
- e) **Avoid an abnormal posture. Ensure a secure footing and maintain balance at all times.** This allows you to better control the power tool in unexpected situations.
- f) **Wear suitable clothing. Do not wear loose clothing or jewelry.** Keep hair and clothing away from moving parts. Loose clothing, jewelry or long hair can be caught by moving parts.
- g) **If dust extraction and collection equipment can be installed, they must be connected and used properly.** Using a dust extractor can reduce dust hazards.
- h) **Do not weigh yourself in false safety and do not overstep the safety rules for power tools, even if you are familiar with the power tool after many uses.** Careless action can lead to serious injuries within fractions of a second.

1.4 Use and care of the power tool

- a) **Do not overload the power tool. Use the appropriate power tool for your work.** With the right power tool you work better and safer in the specified power range.
- b) **Do not use a power tool whose switch is defective.** A power tool that can not be turned on or off is dangerous and must be repaired.
- c) **Unplug the power cord and / or remove a detachable battery before making any adjustments to the device, changing the tool bits, or putting the power tool away.** This precaution prevents the unintentional start of the power tool.
- d) **Store unused power tools out of the reach of children. Do not allow persons to use the power tool that are unfamiliar or have not read these instructions.** Power tools are dangerous when used by inexperienced people.
- e) **Maintain power tools and insert tools with care. Check that moving parts are working properly and do not jam, that parts are broken or damaged enough to impair the functioning of the power tool. Have damaged parts repaired before using the power tool.** Many accidents are caused by badly maintained power tools.
- f) **Keep cutting tools sharp and clean.** Carefully maintained cutting tools with sharp cutting edges become less jammed and easier to guide.
- g) **Use power tools, accessories, tools etc. according to these instructions. Take into account the working conditions and the activity to be performed.** The use of power tools for other than intended applications can lead to dangerous situations.
- h) **Keep handles and grips dry, clean and free of oil and grease.** Slippery handles and gripping surfaces do not allow safe operation and control of the power tool in unforeseen situations.

1.5 Use and care of the battery tool

- a) **Charge the batteries only with chargers recommended by the manufacturer.** A charger suitable for a particular type of battery may cause a fire when used with other batteries.
- b) **Use only the appropriate batteries in the power tools.** Use of other batteries may cause injury or fire.
- c) **Keep the unused battery away from paper clips, coins, keys, nails, screws, or other small metal objects that could cause the contacts to bridge.** A short circuit between the battery contacts can cause burns or fire.
- d) **If used incorrectly, liquid may leak from the battery. Avoid contact with it. In case of accidental contact, rinse with water. If the fluid gets into your eyes, seek additional medical attention.** Leaking battery fluid may cause skin irritation or burns.
- e) **Do not use a damaged or modified battery.** Damaged or altered batteries can behave unpredictably and cause fire, explosion or injury.
- f) **Do not expose a battery to fire or high temperatures.** Fire or temperatures over 130 ° C can cause an explosion.
- g) **Follow all charging instructions and never charge the battery or the cordless tool outside the temperature range specified in the operating instructions.** Incorrect charging or charging outside the permitted temperature range can destroy the battery and increase the risk of fire.

1.6 Service

- a) **Only have your power tool repaired by qualified personnel and only with original spare parts.** This ensures that the safety of the power tool is maintained.
- b) **Never use damaged batteries.** All battery maintenance should only be done by the manufacturer or authorized service centers. Follow the instructions for lubricating and changing accessories.

Additional safety warning from the manufacturer

- After breakage of the grinding disc during operation or damage to the holding fixtures on the protection guard/power tool, the machine must promptly be sent to an after-sales service agent for maintenance
- There is danger of injury when unintentionally actuating the On/off switch.
- Before any work on the machine itself (e. maintenance, tool change, etc.) as well as during transport and storage, remove the battery from the power tool.
- Do not touch grinding and cutting discs before they have cooled down. The discs can become very hot while working.

2. Application

- Extremely compact and ergonomic
- M5 thread spindle lock
- Suitable for diamond blade in 76mm(3")
- Designed for cutting and roughing all kinds of tiles

Model	AGMN76
Input Power	12V-2.5AH
Speed	19,500RPM
Max. Blade Size	φ76x10mm
Max. Cutting Depth	15mm

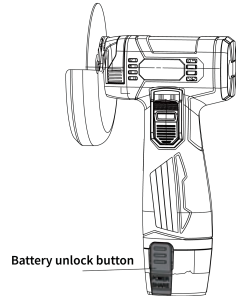
Manufacturer reserves the right to change specifications without notice. Specifications may differ from country to country

3. Using Instructions

3.1 Battery Charging

Note: The battery provided is partially charged. To ensure full battery capacity, fully charge it with the battery charger before using your power tool for the first time.

1. Lithium-ion batteries can be charged at any time without reducing their lifespan, and interrupting the charging process will not damage the battery.
2. Lithium-ion batteries are protected against deep discharge by "Electronic Cell Protection (ECP)". When the battery is depleted, the machine is shut off by a protection circuit, causing the inserted tool to stop rotating.
3. Do not press the On/Off switch after the machine has been automatically shut off, or the battery may be damaged.
4. To remove the battery, press the unlock buttons and pull the battery downward. Do not use force.
5. Do not use the power tool if the switch does not turn it on or off properly. Such a tool is hazardous and requires repair.
6. Before making adjustments, changing accessories, or storing the power tool, disconnect the plug from the power source and/or remove the battery pack. These safety precautions reduce the risk of accidental power tool activation.



3.2 Installation of Guard Devices

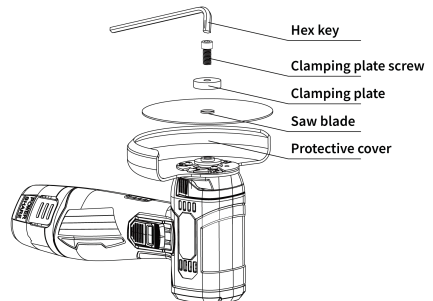
3.2.1 Before Installation of Guard Devices

When performing any operations on the machine itself (such as maintenance, tool changes, etc.) as well as during transportation and storage, remove the battery from the power tool. There is a risk of injury from accidental activation of the On/Off switch.

Note: If the grinding disc breaks during operation or the clamping devices on the guard/power tool are damaged, the machine must be promptly sent to an after-sales service agent for maintenance.

3.2.2 Installation of Cutting Guard

When cutting with bonded abrasives, always use the cutting guard. Provide for sufficient dust extraction when cutting stone.



3.2.3 Installation of Grinding Tools

When performing any operations on the machine itself (such as maintenance, tool changes, etc.) as well as during transportation and storage, remove the battery from the power tool. There is a risk of injury from accidental activation of the On/Off switch. Do not touch grinding and cutting discs before they have cooled down, as they can become very hot during operation. Clean the spindle and all parts to be mounted. To tighten or loosen the grinding tools, push the spindle lock button forward and simultaneously turn the grinding tool to secure the spindle. Activate the spindle lock button only when the spindle is at a standstill; otherwise, the machine may be damaged.

3.2.4 Grinding / Cutting Disc Installation

Pay attention to the dimensions of the grinding tools. The mounting hole diameter must fit the mounting flange without any play. Do not use reducers or adapters. When using diamond cutting discs, ensure that the direction-of-rotation arrow on the diamond cutting disc matches the rotation direction of the machine (refer to the direction-of-rotation arrow on the housing). See the graphics page for the mounting sequence.

After mounting the grinding tool and before switching on, check that the grinding tool is correctly mounted and can rotate freely. Ensure that the grinding tool does not rub against the guard or other components.

3.2.5 Disc Installation Instructions

Pull the half-circle neck collar until it is stopped by the bolt. Put on the disc and use the wrench to tighten the hex head.

3.2.6 Approved Grinding Tools

All grinding tools mentioned in these operating instructions can be used. The permissible speed (revolutions per minute) or peripheral speed (meters per second) of the grinding tools used must at least match the values given in the table. Therefore, observe the permissible rotational peripheral speed on the label of the grinding tool.

3.2.7 Dust / Chip Extraction

Dust from materials such as lead-containing coatings, some wood types, minerals, and metals can be harmful to health. Contact with or inhalation of the dust may cause allergic reactions and/or lead to respiratory infections in users or bystanders. Certain dusts, such as oak or beech dust, are considered carcinogenic, especially in connection with wood treatment additives (such as chromates and wood preservatives). Materials containing asbestos may only be worked on by specialists. Ensure good ventilation of the workplace. It is recommended to wear a respirator of filter class P2. Observe the relevant regulations in your country for the materials to be worked on. Prevent dust accumulation in the workplace, as dust can ignite easily.

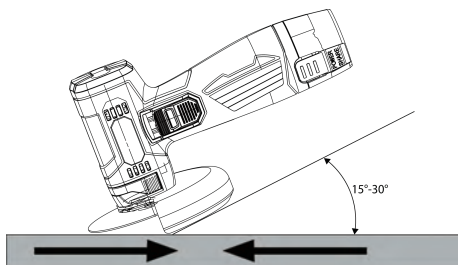
3.3 Practical Applications

⚠ To reduce the risk of explosion, electric shock and other hazards and injuries, check for hidden wires, gas and water pipes beneath the workpiece surface before operation!

The operator must firmly grip the main handle of the tool before operation!

Grinding:

1. Maintain a 15-degree angle between the grinding wheel and the workpiece for optimal partial contact.
2. Apply light pressure and move the tool back and forth to avoid overheating, discoloration or marking of the workpiece.
3. Do not use a cutting wheel for grinding.
4. To prevent sparks and grinding debris from hitting you, hold the tool appropriately according to the grinding wheel's rotation direction. Sparks generated during metal grinding are prohibited from scattering in areas where flammable materials are stored to prevent fires!



4. Cleaning and Maintenance

⚠ Caution

Always be sure that the tool is switch off and unplugging before attempting to perform inspection and maintenance.

- The tool and its air vents have to be kept clean, regularly clean the tool's air vents or whenever the vents start to become obstructed.
- Check the all screws if be loosened or no periodically.
- Usually check the cord insulation if broken or not

5. Accessories

- Original battery is recommended for use with vacuum suction cup
- Using other accessories or attachments may result in personal injury.
- Only use original accessories or accessories for the stated purpose.

6. Environmental Protection

- Do not dispose of electrical appliances in the household waste.
- Follow the local provisions for the disposal of electrical or battery products.
- Valuable materials can be recovered by recycling.
- The electrical or battery components used for construction are in accordance with the regulation European Directive 2012/19 / EU on waste electrical and electronic equipment and transposition into national law., used electrical appliances must be collected separately and recycled in an environmentally sound manner.
- Contact us for further information.



7. Warranty

- The guarantee covers all manufacturing or assembly defects in accordance with the legislation in force. The guarantee does not cover malfunctions caused by improper use, overloads, failure to follow the operating instructions and normal wear and tear.
- For more details and information, consult the general guarantee conditions at www.bihuitools.com



No.528, Tongxin Road, Tongxiang City, Zhejiang
www.bihuitools.com • sales@bihuitools.com • Made in P.R.C