

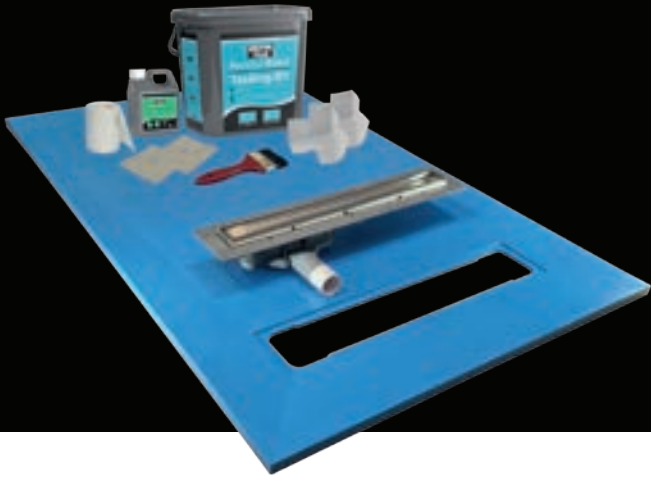


ULTRATILE

# ProDeck Installation Guide

# LINEAR WETROOM SYSTEM

## INSTALLATION INSTRUCTIONS



### INSTALLATION OVERVIEW

These instructions assume the wetroom has been appropriately designed and all plumbing and electrical work is to building regulations.

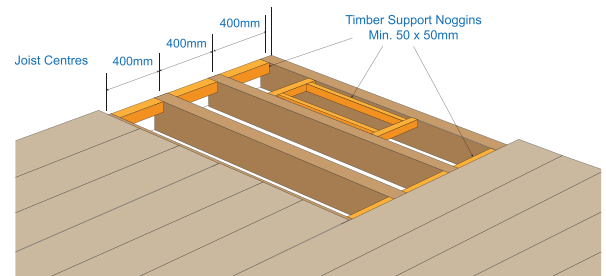
These instructions will cover the most typical level floor installations on suspended timber or solid concrete floors. For raised floor areas the instructions can be applied where appropriate.

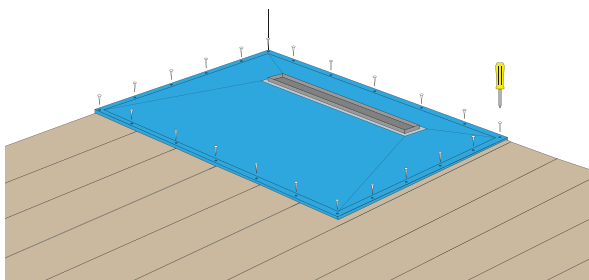
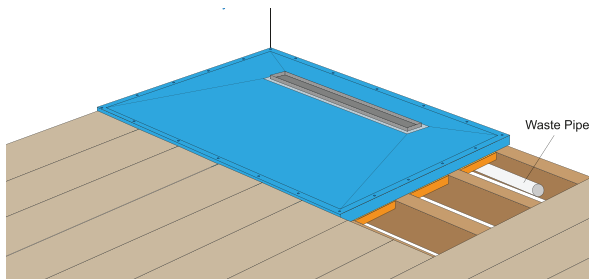
ProDeck is a load bearing deck which can sustain a load of 470kgs over 400mm joist centres without deflection.

**PLEASE THOROUGHLY READ THESE INSTRUCTIONS BEFORE UNDERTAKING ANY WORK.**

### INSTALLATION ON TIMBER FLOORS

1. Remove the floorboards to expose the joists in the area where the ProDeck will be fitted.
2. Inspect the existing joists and if in doubt remedial action should be taken to ensure the floor is strong and free of movement.
3. If joist centres are 400mm or less the ProDeck can be laid straight over the existing joists without under boarding.
4. If the joist centres are over 400mm install additional noggins for support.
5. Install extra noggins around the drain slot.
6. All edges of the ProDeck must be supported.
7. Lay the ProDeck in position and consider the waste location and connection.
8. Install the drain & connect the waste using the method shown overleaf.
9. To fix the ProDeck, pilot drill, countersink and screw down securely with appropriate wood screws.
10. Check to make sure there is no movement and that the ProDeck is level.
11. Use additional fixings if movement is detected, ProDeck can be screwed down anywhere on the surface, not just around the edges.

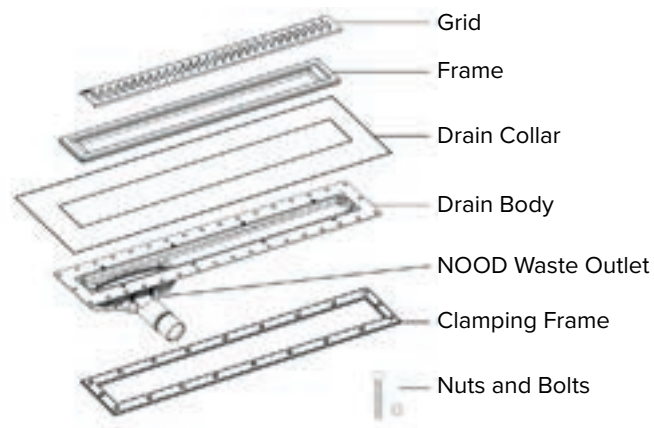




## INSTALLING THE PURUS LIVING LINEAR DRAIN - TILING

Waste connections can be made in the following ways:

- Access from below.
- Connecting a length of pipe to the trap to enable final connection outside the deck area.



## INSTALLATION ON EXISTING CONCRETE FLOORS

1. If inserting the ProDeck, the area beneath the deck must be cut and chiseled out to accommodate the deck, drain and waste pipe.
2. Consult the waste installation method overleaf and consider the waste pipe connection.
3. Install drain into the ProDeck and connect the waste.
4. Bed the deck down on tile adhesive or sand and cement.
5. Ensure the deck is level then allow to fully dry.
6. Pilot drill the deck and securely screw down.
7. Check to make sure there is no movement and that the tray is level.
8. Use additional fixings if movement is detected, screw heads must be countersunk into the tray.

The drain body is set into the rebate from the top of the ProDeck (the side with the slopes).

The drain body is fixed into position using the clamping frame on the underside of the ProDeck and bolted through.

The bolts provided should be spaced out evenly around the drain body. Pilot drill the holes through the drain body and ProDeck and bolt through. Do not use power tools and do not over tighten.

See diagram below.



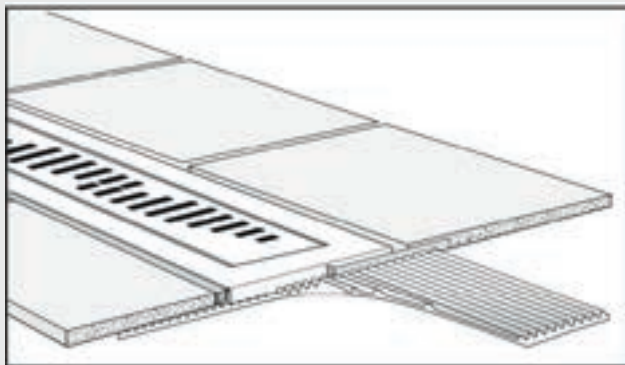
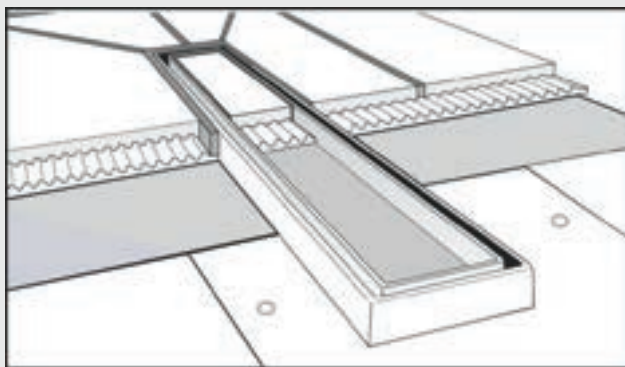
Depending on how the ProDeck is installed the floor may need to be levelled to the same height as the deck, screed or tile backer boards are commonly used. Tile adhesive or 2 part filler should be used to fill any small gaps.

Please consult your tanking instructions before proceeding.

The white drain collar is laid over the top of the drain and tanked in between two coats of the tanking.

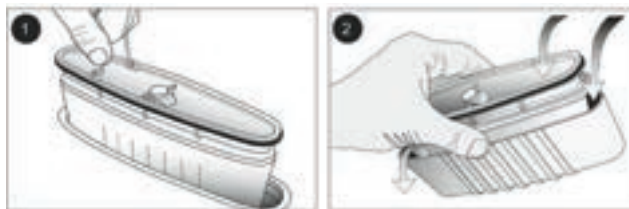
The Tile Insert grate is designed for use with 10mm tiles. Tile up to the drain frame which will leave space for a grout line.

The pattern grate (Twist) can be height adjusted using the screws to accommodate different tile thickness, 10-26mm. The surrounding frame must be bedded down onto tile adhesive.



## CLEANING AND MAINTENANCE

**These Cleaning and Maintenance instructions must be handed to the client upon completion.**



1. Lift out the NOOD water trap as above.
2. If necessary, rinse the NOOD water trap using water. Hold the NOOD water trap with the spring-loaded body fully open whilst rinsed clean.

Use only water and, if required, a small brush to clean the NOOD. It is important that you do not use bleach, bleach-based, caustic cleaning products or hair dye products on or in the NOOD water trap. Remove the NOOD first.

If bleach, deblocker, or any other cleaning product is to be used in the pipework, then the NOOD water trap must first be removed and bleach, deblocker, or any other cleaning product poured directly into the pipework.

3. Replace the NOOD water trap with two thumbs at each short end.

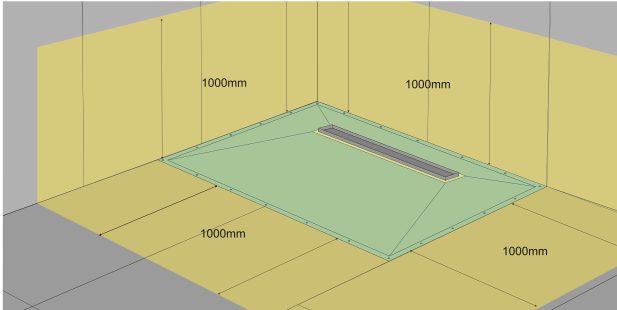
For resealing the NOOD water trap, you will need to use a washing-up liquid around the top rubber gasket when pushing the NOOD back into position for ease of installation.

Make sure the gaskets are completely clean so the NOOD is watertight. Ensure when placed back that the gully is fully inserted so the gasket is watertight using two thumbs at each short end.

If you have a blockage in the waste pipe system, remove the NOOD before rectifying/cleaning.

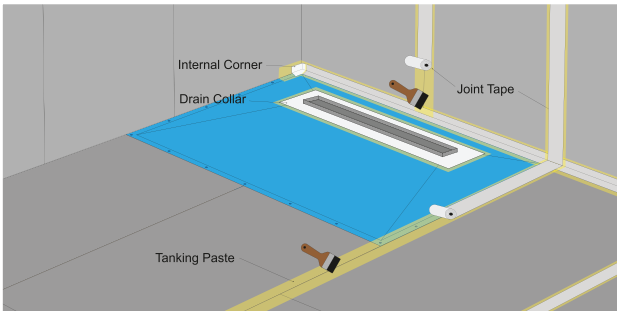
# TANKING INSTRUCTIONS

## 1. TANKING OVERVIEW

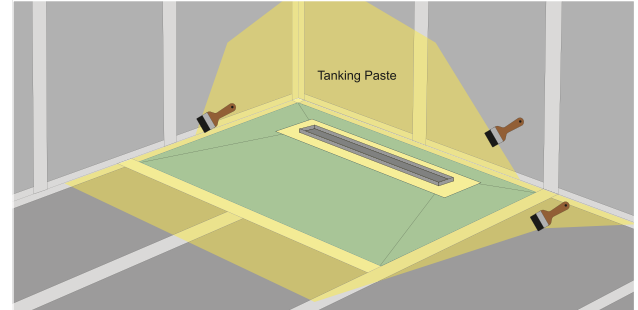


- Tank at **minimum** 1000mm up the walls and 1000mm into the room from the edge of the wet area.
- The entire surface of the ProDeck must also be tanked.
- The aim is to create one continuously tanked area.
- Areas outside the main wet space that are exposed frequently to water must also be tanked.

## 2. TANKING METHOD



- Abrade the entire surface of the ProDeck to provide a key and remove any contaminants, clean the area removing all loose material and dust (Sand paper included).
- Fill any gaps using tile adhesive or a 2 part filler and allow to dry.
- Prime the entire area to be tanked, including the ProDeck, using guidelines on the bottle.
- Install corners first and then overlap the joint tape onto them, all joints within the wet area must be covered, bed the components (corners, tapes & drain collar) into the tanking paste.



- Starting from the corner and working outwards, apply the tanking coat using a brush or roller, try to apply this coat by painting in one direction.
- Paint the tanking onto and cover the entire drain gasket collar.
- Allow this coat to dry before applying a second coat to the gasket collar, paint this coat on in the opposite direction to the first and allow to dry.

# SQUARE WETROOM SYSTEM

## INSTALLATION INSTRUCTIONS



- 1 - Vinyl Grate (Not Required)
- 2 - Clamping Ring
- 3 - Nood no-odour trap
- 4 - Gully top section
- 5 - Gully middle section
- 6 - Gully seal (pre-installed into section 7)
- 7 - Gully bottom section

**PLEASE THOROUGHLY READ THESE INSTRUCTIONS  
BEFORE UNDERTAKING ANY WORK.**

## INSTALLATION OVERVIEW

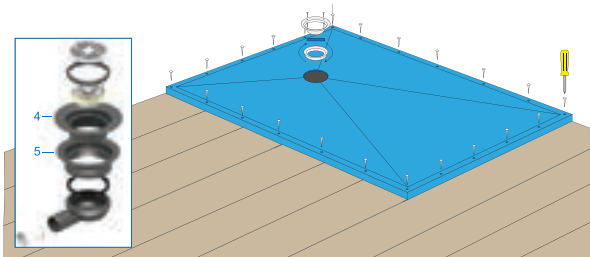
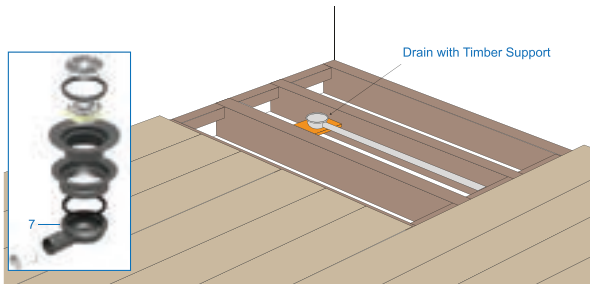
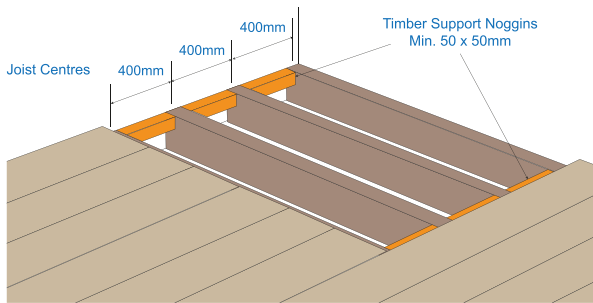
These instructions assume the wetroom has been appropriately designed and all plumbing and electrical work is to building regulations.

These instructions will cover the most typical level floor installations on suspended timber or solid concrete floors. For raised floor areas these instructions can be applied where appropriate.

ProDeck is a load bearing deck which can sustain a load of 470kgs over 400mm joist centres without deflection.

## INSTALLATION ON TIMBER FLOORS

1. Remove the floorboards to expose the joists in the area where the ProDeck will be fitted.
2. Inspect the existing joists and if in doubt remedial action should be taken to ensure the floor is strong and free of movement.
3. If joist centres are 400mm or less the ProDeck can be laid straight over the existing joists without under boarding.
4. If the joist centres are over 400mm install additional noggins for support.
5. All edges of the ProDeck must be supported.
6. Lay the ProDeck in position and consider the waste location and connection.
7. Connect the waste using the method shown overleaf.
8. To fix the ProDeck pilot drill, countersink and screw down securely with appropriate wood screws.
9. Check to make sure there is no movement and that the ProDeck is level.
10. Use additional fixings if movement is detected, ProDeck can be screwed down anywhere on the surface, not just around the edges.



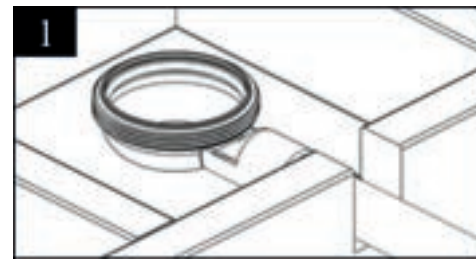
## INSTALLATION ON EXISTING CONCRETE FLOORS

1. If inseting the ProDeck, the area beneath must be cut and chiseled out to accommodate the ProDeck, drain and waste pipe.
2. Read overleaf the waste installation method.
3. Connect the bottom section of the drain to pipework.
4. Bed the ProDeck down on tile adhesive or sand and cement.

5. Finish installing the drain.
6. Ensure the ProDeck is level then allow to fully dry.
7. Pilot drill the ProDeck and securely screw down.
8. Check to make sure there is no movement and that the ProDeck is level.
9. Use additional fixings if movement is detected, screw heads must be countersunk.

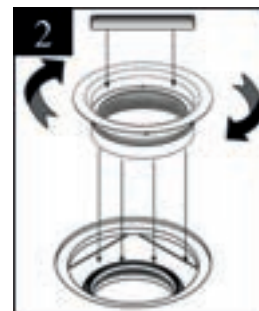
## LEVELLING THE FLOOR TO THE PRODECK

Depending on how the ProDeck is installed the floor may need to be levelled to the same height as the deck, screed or tile backer boards are commonly used. Tile adhesive or 2 part filler should be used to fill any small gaps.



### Drain Installation

Measure drain location and then connect section (7) of the gully to the waste pipe using solvent-weld adhesive centrally underneath the hole of the deck. The gully seal section (6) is pre installed in the gully bottom section. Support the gully vertically with a cross-batten or board.

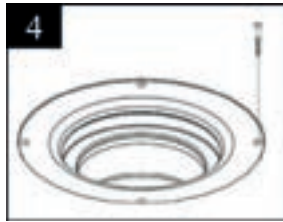


Lay ProDeck over and secure. Screw through gully section (5) and tighten using the installation tool





Push gully section (4) firmly inside the middle section (5) until they click together



Pilot section (4) and screw down using the supplied screws.  
Do not use power tools.  
Insert the NOOD water trap.

**Important - Note that before laying tiles the installation must be tanked appropriately, the entire surface of the ProDeck must be covered in tanking.**

**Do not tile directly onto the ProDeck without tanking first.**

1. Please read and consider the tanking instructions on the rear page before continuing.
2. Use sandpaper to abrade the surface of the ProDeck to remove contaminants and provide a "key", then clean the area of any dust/loose material.
3. Using the supplied primer, prime the entire wet area including the ProDeck and allow to dry.



4. Remove the **Clamping Ring** from inside the drain.



5. Remove the film from the bottom of the **Butyl Gasket** and stick it down centrally over the drain.
6. Locate the centre of the drain and cut a 107mm hole in the gasket.



7. Firmly press in the **Clamping Ring** to secure the **Butyl Gasket** into the drain.
8. Ensure the **Butyl Gasket** is completely stuck down and free from bubbles.



9. Tank the entire wet area (please see tanking instructions on rear page) ensuring to tank onto the **Butyl Gasket** by at least 30mm, allow to dry.

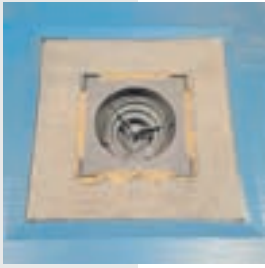


10. If using a **PK155 Grid & PK155 Grid Adapter**, first consider your tile thickness.
11. The **PK155 Grid Adapter** comes complete with two **Riser Rings**, use the appropriate amount of **Risers Rings** for your tile thickness.

6-8mm Tile = 0 Rings

10-12mm Tile = 1 Rings

Up to 15mm Tile = 2 Rings



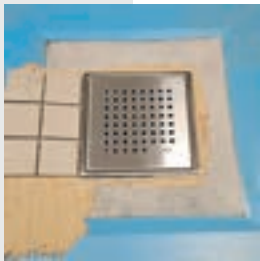
12. Install the **PK155 Grid Adapter** into the drain and onto a solid even bed of tile adhesive.



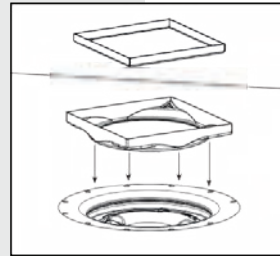
13. Apply tile adhesive to the inside of the **PK155 Grid Frame**.



14. Seat the **PK155 Grid Frame** onto the **PK155 Grid Adapter**.
15. Clean off any excess tile adhesive that may hinder the drain trap removal.
16. Check the **PK155 Grid Frame** is the correct height and level before the adhesive dries.



17. Commence Tiling.



18. If using the Tile Insert 130 Grid, install into the drain, bed the plastic frame into tile adhesive, check the height and levels. Commence tiling.

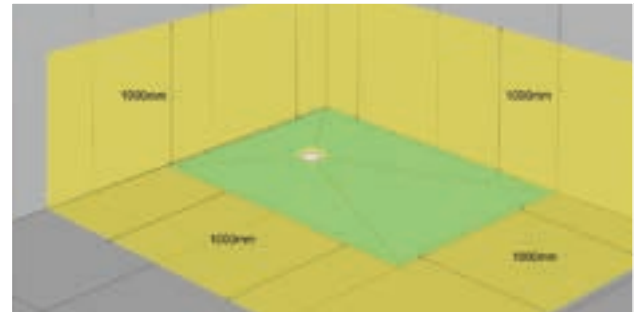


## IMPORTANT NOTES

1. Care should be taken to ensure the ProDeck is secure with no movement and installed level.
2. The entire ProDeck must be tanked.
3. Tile adhesive should be flexible bag powder type S1 or S2 suitable for use in wet areas.

## TANKING INSTRUCTIONS

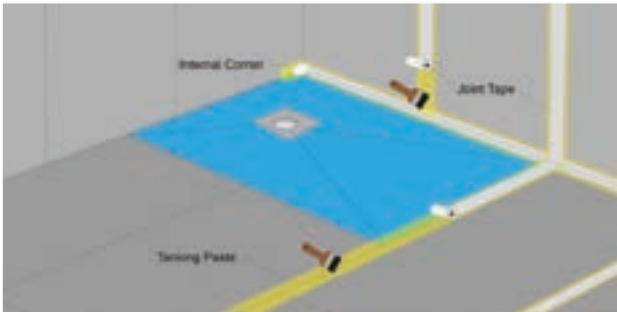
### 1. TANKING OVERVIEW



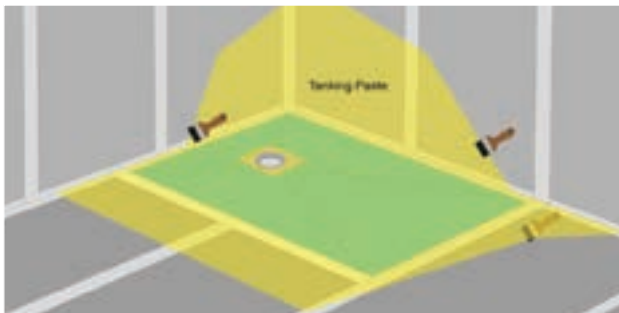
- Tank at **minimum** 1000mm up the walls and 1000mm into the room from the edge of the wet area.
- The entire surface of the ProDeck must also be tanked.
- The aim is to create one continuously tanked area.
- Areas outside the main wet space that are exposed frequently to water must also be tanked.



## 2. TANKING METHOD



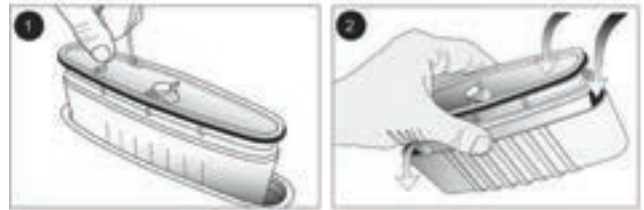
- Abrade the entire surface of the ProDeck to provide a key and remove any contaminants, clean the area removing all loose material and dust.
- Fill any gaps using tile adhesive or a 2 part filler and allow to dry.
- Prime the entire area to be tanked, including the ProDeck, using guidelines on the bottle.
- Install corners first and then overlap the joint tape onto them, all joints within the wet area must be covered, bed the components into the tanking paste.



- Starting from the corner and working outwards, apply the first tanking coat using a brush or roller, try to apply this coat by painting in one direction only.
- Paint the tanking onto the drain gasket at least 30mm.
- Allow this coat to dry before applying a second coat, paint this coat on in the opposite direction to the first and allow to dry.

## CLEANING AND MAINTENANCE

These Cleaning and Maintenance instructions must be handed to the client upon completion.



1. Lift out the NOOD water trap as above.
2. If necessary, rinse the NOOD water trap using water. Hold the NOOD water trap with the spring-loaded body fully open whilst rinsed clean.

Use only water and, if required, a small brush to clean the NOOD. It is important that you do not use bleach, bleach-based, caustic cleaning products or hair dye products on or in the NOOD water trap. Remove the NOOD first.

If bleach, deblocker, or any other cleaning product is to be used in the pipework, then the NOOD water trap must first be removed and bleach, deblocker, or any other cleaning product poured directly into the pipework.

3. Replace the NOOD water trap with two thumbs at each short end.

For resealing the NOOD water trap, you will need to use a washing-up liquid around the top rubber gasket when pushing the NOOD back into position for ease of installation.

Make sure the gaskets are completely clean so the NOOD is watertight. Ensure when placed back that the gully is fully inserted so the gasket is watertight using two thumbs at each short end.

If you have a blockage in the waste pipe system, remove the NOOD before rectifying/cleaning.



INSTALLATION VIDEO



**Technical Helpline: 0300 1240941**

[Instarmac.co.uk](http://Instarmac.co.uk)

[ultratileadhesives.co.uk](http://ultratileadhesives.co.uk)

