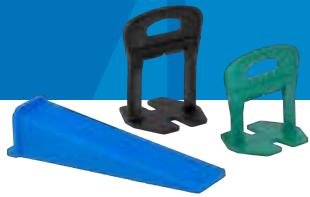


MAPELEVEL PROWDG SYSTEM

Wedge levelling system for ceramic tiles and stone slabs on floors and on walls



BENEFITS AND FEATURES

- Easy, precise and fast application with pliers
- Wedge with reinforced structure to be more durable
- Rapid and easy removal
- Reusable wedge
- Suitable for coverings up to 20 mm thick
- Complete range of coloured spacers in two models and 7 thicknesses
- For tiles up to 20 mm thick

WHERE TO USE

MapeLevel ProWDG System is a tile levelling system for ceramic and stone material of various thickness and size, it can be used on floors and walls, particularly suitable for installing large formats.

MapeLevel ProWDG System has been developed to help the installer during laying of the tiles, especially when installing large-format tiles or in case of uneven coverings on deteriorated substrates. The system allows to obtain joints with a uniform width and perfectly flat floors, avoiding the formation of lippage between adjacent tiles.

TECHNICAL CHARACTERISTICS

MapeLevel ProWDG System is a levelling systems composed of:

- **MapeLevel ProWDG**, polypropylene levelling wedges
- **MapeLevel ProWDG Spacer C**, removable HDPE spacer clips for ceramic tiles and stone slabs with thickness from 3 to 12 mm
- **MapeLevel ProWDG Spacer C-H**, removable HDPE spacer clips for ceramic tiles and stone slabs with thickness from 12 to 20 mm

MapeLevel ProWDG Spacer C is available in 7 different thicknesses (0.5, 1, 1.5, 2, 3, 4, 5 mm), each one identified by a different colour, for joints from 0.5 to 5 mm wide; while **MapeLevel ProWDG Spacer C-H** is available in 4 different thicknesses (1, 2, 3, 5 mm), for joints from 1 to 5 mm wide. The spacer clips are designed to break off below the surface of the ceramic tile, for a quick and safe removal.

Thanks to the knurling of the wedge surface, **MapeLevel ProWDG** perfectly adheres to the spacer clips based on the pressure strength and levels the tiles accordingly. Moreover, on the wedge surface there is a central rib that perfectly directs the wedge itself into the spacer base.

Quick and easy to apply, these two simple elements (wedge and spacer clip) are able to avoid tiles lippage resulting in a perfectly flat tiled surface.

ADVANTAGES

MapeLevel ProWDG System is a complete system available in different sizes for ceramic floors and walls up to 20 mm thick.

To allow the wedge to be inserted into the spacer clip, the system includes traditional pliers **MapeLevel EasyWDG Pushing-Pliers**.

Removing **MapeLevel ProWDG Spacer C** or **MapeLevel ProWDG Spacer C-H** is extremely simple and fast. The wedge is easily separated from the disposable clips and can be re-used.

MapeLevel ProWDG System is made of recycled plastic material.

The **MapeLevel ProWDG** wedge has a reinforced structure, which makes it more durable and reusable several times, thus avoiding unnecessary waste of plastic material, respecting the environment, and making it more eco-friendly.

The tip of **MapeLevel ProWDG** is larger, which makes the application easier.

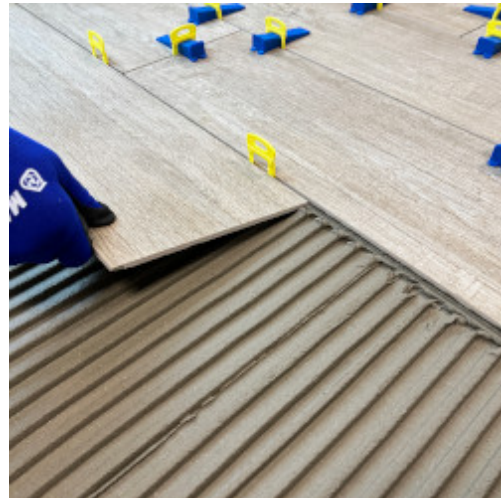
The lower back part of the wedge has two extensions, which increase its levelling surface in contact with the tiles and protect the tiles from scratches that could be caused by the pliers.

APPLICATION PROCEDURE

Before using **MapeLevel ProWDG System**, check if the system is suitable with the chosen tile and stone finish. Make sure the tile surface is perfectly clean and free from residues of tile adhesive or abrasives materials before applying **MapeLevel ProWDG**.

Set spacers

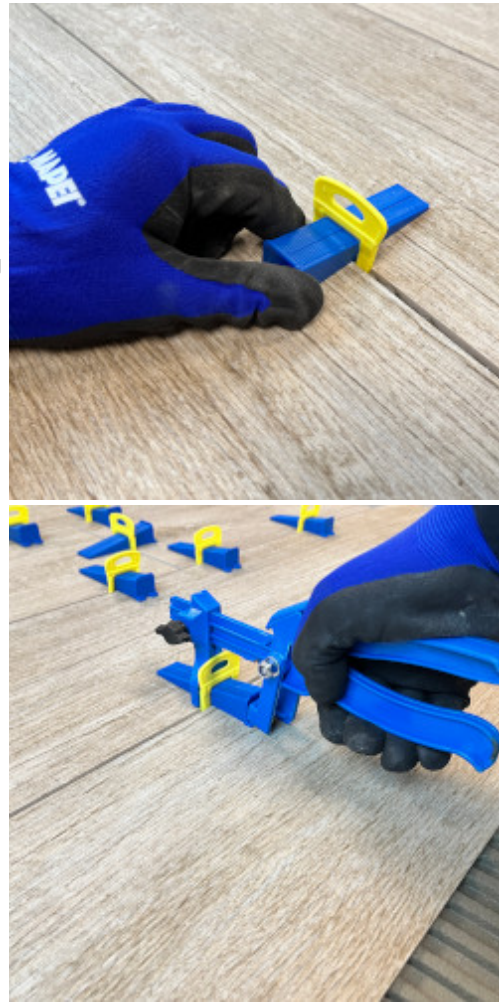
Spread the adhesive and insert the spacer **MapeLevel ProWDG Spacer C** or **MapeLevel ProWDG Spacer C-H** underneath the tiles. According to the tile size, apply one or more spacers on each side of the tile. Then lay adjacent tiles.



Insert the wedge

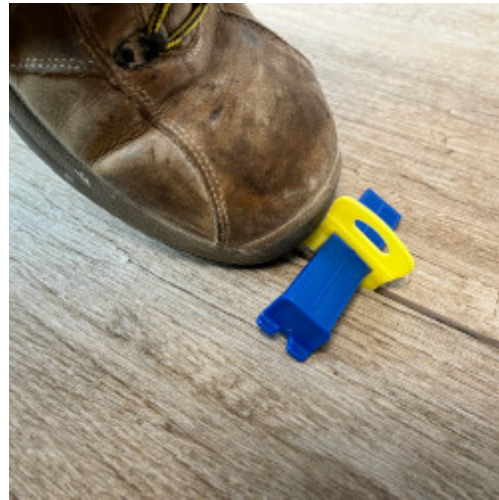
Insert **MaPeLevel ProWDG** into the spacer clip (in the direction of the already laid tile) and press with **MaPeLevel EasyWDG Pushing-Pliers** until obtaining the desired tile level.

Remove any fresh tile adhesive from around clips to prevent dried/cured adhesive from potentially chipping or scratching the tile surface when removing clips later.



Removal

Once the adhesive is set, remove **MapeLevel ProWDG Spacer C** or **MapeLevel ProWDG Spacer C-H** by tapping the spacer clips with a rubber mallet or feet, in the same direction as the grout joint. For quick and easy removal, spacer clips are designed to break off below the surface of the tile. The wedge is easily separated from the disposable clips and can be re-used.

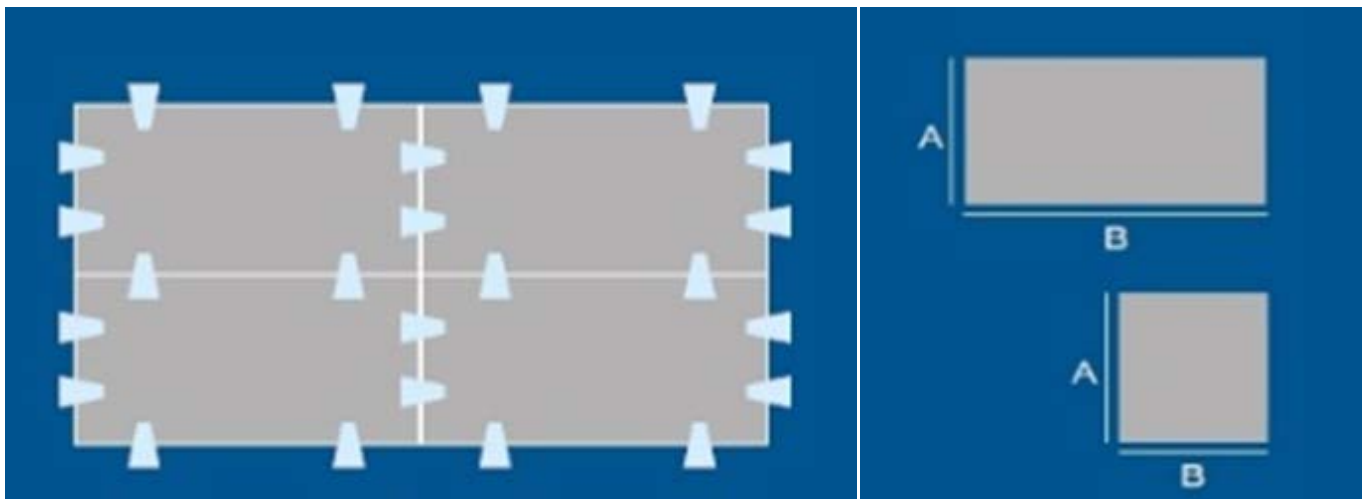


CONSUMPTION TABLE

INDICATIVE CONSUMPTION (wedges / spacers needed) FOR 10 m²

A																			B	
10	1980																			
15	1317	876																		
20	495	328	490																	
25	396	263	391	312																
30	660	438	488	389	431															
40	495	328	365	291	322	240														
45	440	292	324	258	285	213	189													
50	396	263	291	232	256	191	169	152												
60	330	219	242	193	212	158	141	126	105											
75	396	263	258	206	212	158	140	126	104	99										
80	371	246	241	192	198	148	131	117	97	93	87									
90	330	219	214	171	176	131	116	104	86	82	77	68								
100	297	197	192	153	157	117	104	93	77	73	68	61	54							
120	330	219	200	160	157	117	104	93	77	71	66	59	52	49						
150	330	219	192	153	146	109	96	86	71	64	60	53	47	44	38					
180	330	219	186	149	139	103	91	82	68	60	56	49	44	40	34	31				
200	347	230	192	153	140	104	92	83	68	59	55	49	44	39	33	30	28			
cm	10	15	20	25	30	40	45	50	60	75	80	90	100	120	150	180	200			B

Consumption is approximate and may vary according to tile installation layout and tile flatness.



PACKAGING

Product	Size (mm)	Colour	Packaging	Pallets
		Blue	Boxes 14 x 100 piece bags	12 boxes
	0.5	Orange	Boxes 12 x 250 piece bags	12 boxes
	1	Green	Boxes 12 x 250 piece bags	12 boxes
	1.5	Grey	Boxes 12 x 250 piece bags	12 boxes
	2	Black	Boxes 12 x 250 piece bags	12 boxes
	3	White	Boxes 12 x 250 piece bags	12 boxes
	4	Yellow	Boxes 12 x 250 piece bags	12 boxes
	5	Red	Boxes 12 x 250 piece bags	12 boxes
	1	White	Boxes 40 x 50 piece bags	12 boxes
	2	White	Boxes 40 x 50 piece bags	12 boxes
	3	White	Boxes 40 x 50 piece bags	12 boxes
	5	White	Boxes 40 x 50 piece bags	12 boxes
			Boxes 15 x 1 piece bags	

SAFETY INSTRUCTIONS FOR PREPARATION AND APPLICATION

MapeLevel ProWDG System is an article and referring to the current European regulations (Reg. 1907/2006/CE - REACH) does not require the preparation of the Safety Data Sheet. During use, it is recommended to wear gloves and goggles and follow the safety requirements of the workplace.
PRODUCT FOR PROFESSIONAL USE.

WARNING

Although the technical details and recommendations contained in this product data sheet correspond to the best of our knowledge and experience, all the above information must, in every case, be taken as merely indicative and subject to confirmation after long-term practical application; for this reason, anyone who intends to use the product must ensure beforehand that it is suitable for the envisaged application. In every case, the user alone is fully responsible for any consequences deriving from the use of the product.

Please refer to the current version of the Technical Data Sheet, available from our website www.mapei.com

LEGAL NOTICE

The contents of this Technical Data Sheet (“TDS”) may be copied into another project-related document, but the resulting document shall not supplement or replace requirements per the TDS in force at the time of the MAPEI product installation.

The most up-to-date TDS can be downloaded from our website www.mapei.com.

ANY ALTERATION TO THE WORDING OR REQUIREMENTS CONTAINED OR DERIVED FROM THIS TDS EXCLUDES THE RESPONSIBILITY OF MAPEI.

Mapei S.p.A.

Via Cafiero, 22, 20158, Milano



+39-02-376731



www.mapei.com



mapei@mapei.it

9301-11-2025 en (IT)

Any reproduction of texts, photos and illustrations published here is prohibited and subject to prosecution

